

STATISTICAL BULLETIN ON FOREIGNERS AND IMMIGRATION

This Bulletin presents data on foreign workers affiliated to and registered as in employment in the Social Security on 31 December 2008. It analyses the evolution of foreign workers in the general context of increased affiliations to the Social Security in Spain in the last decade, as well as the comparison with Spanish workers.

Between 2000 and 2007, the number of foreigners registered as in employment in the Social Security saw a continuous increase which only came to a halt in 2008. That period coincided with a sharp increase in the number of workers registered as in employment in the Social Security system and much of that increase was due to the contribution of foreign workers.

Analysed here are the main national collectives of foreign workers, providing information on their employment —

occupation, activity sector, working hours, province where they are currently registered as in employment, etc.— and on the workers themselves —age and sex—.

Similarly, the comparison of the main figures on Spanish and foreign workers highlights the differences in occupation sectors, affiliation regimes, type of working hours, age and sex of workers, etc.

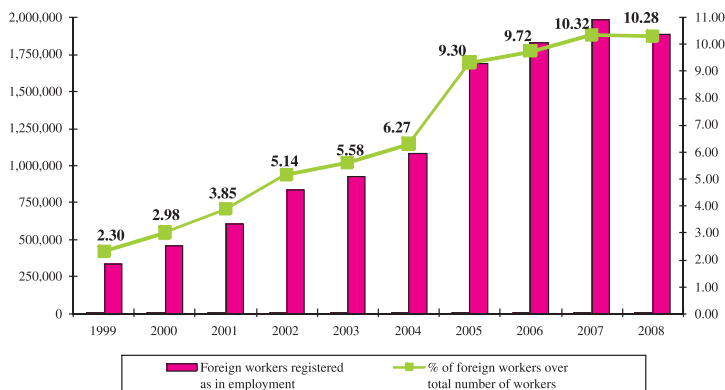
Lastly, the report provides the geographic distribution of foreign workers and their numbers as a share of the total number of workers in each province.

Consuelo Rumí Ibáñez

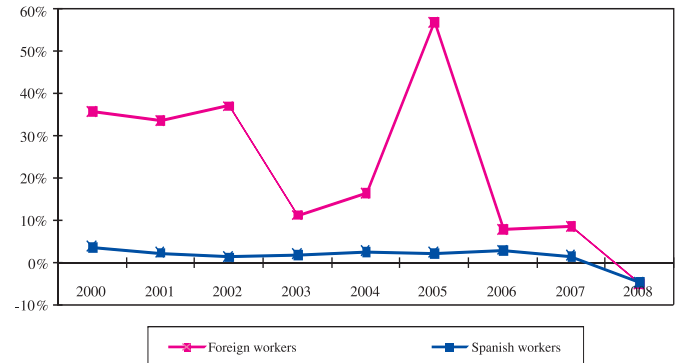
Secretary of State for Immigration and Emigration
President of the Permanent Observatory for Immigration

FOREIGN WORKERS AFFILIATED TO AND REGISTERED AS IN EMPLOYMENT IN THE SOCIAL SECURITY. 31-12-2008

Foreign workers registered as in employment and share over total number of workers. 1999-2008



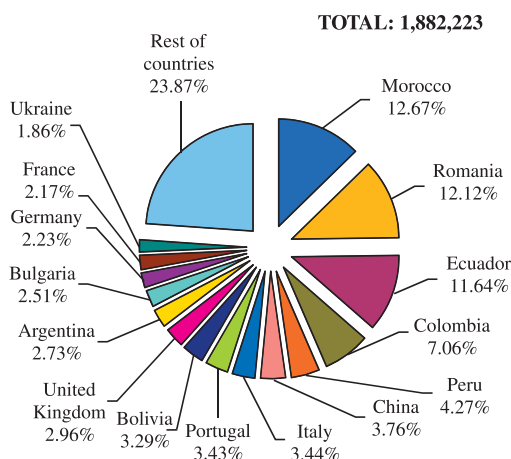
Annual variation (%) in foreign and Spanish workers registered as in employment. 2000-2008



Note: Data on 31 December.

In the last decade, the increase in the number of workers affiliated to and registered as in employment in the Social Security has been influenced by the sharp increase in the number of foreign workers. Between December 1999 and December 2008, the number of workers rose by 3,727,287 affiliates, of whom 1,547,247 were foreign workers. That means that 41.51% of the total increase in new affiliations to the Social Security was due to foreign workers.

Foreign workers registered as in employment. Main nationalities. 31-12-2008



The **annual increases** in the number of Spanish workers registered as in employment do not reach the 4% mark in any of the years under review. However, the number of foreign workers registers a year-on-year average increase of over 20%, reaching the highest peak in 2005 (56.82%) in contrast with that of Spanish workers in 2000 (3.78%). In 2008, both groups coincide in shrinking numbers of workers, with foreign workers falling by 4.99% and Spanish workers by 4.60%.

The data on foreign workers shows a much more irregular evolution than that of Spanish workers. After experiencing annual increases of more than 30% between 2000 and 2002, the number of foreign workers increased at a rate of 11% in 2003, 16% in 2004, and at the above-mentioned rate of 56.82% in 2005, as a result of the regularisation of foreign workers process. In the following years the increase rates levelled off to more moderate percentages, below 10% in 2006 and 2007, and witnessed a drop in the course of 2008.

On 31 December 2008, there were 1,882,223 foreign workers affiliated to and registered as in employment in the Social Security in Spain, representing 10.28% of the total number of workers registered as in employment on that date. In 1999, foreign workers made up just 2.30%, which means that **the share of foreign workers over the total number of workers multiplied by 4.5 in one decade.**

The largest collective of foreign workers is the **Moroccan**, with 238,048 workers, followed by the **Romanian**, with 227,690 workers. The third and fourth places are taken up by **Ecuadorians** and **Colombians** (218,718 and 132,643, respectively), followed by workers of **Peruvian** origin (80,281). In the context of the total number of foreign residents, not just workers affiliated to and registered as in employment in the Social Security, the fifth place is taken up by the British, although they rank tenth in number of foreign workers. These five nationalities make up nearly half of the foreign workers in Spain (47.77%).

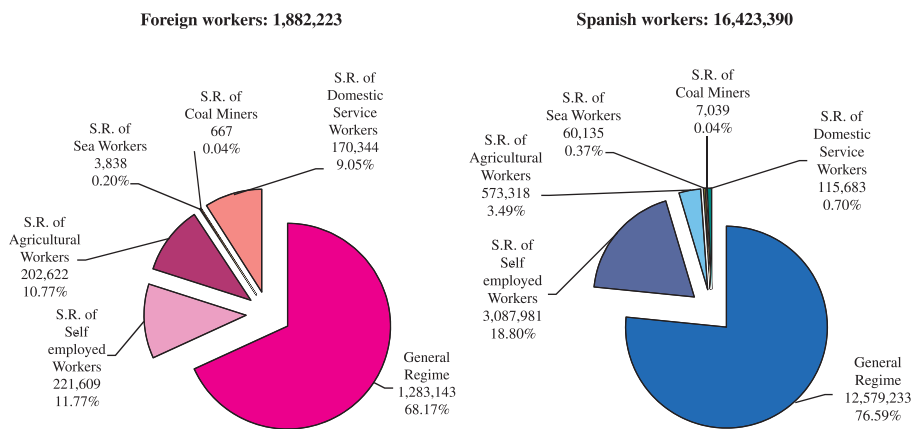
Compared with the previous year, only three of the main fifteen nationalities experienced increases: Bolivia (22.20%), China (11.25%) and Peru (2.60%). All the other nationalities witnessed falls. The Portuguese (-16.68%) and the Ecuadorians (-14.80%) registered the sharpest falls in percentage terms.

Regime, activity sector and contribution group

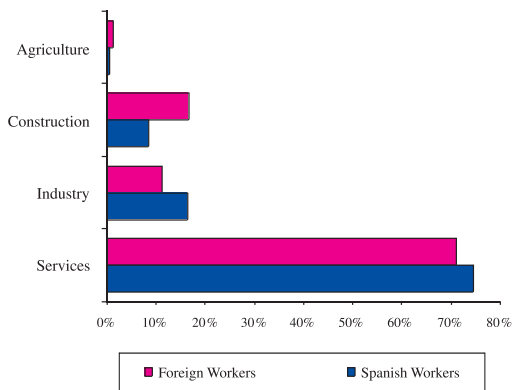
In an initial overview of the situation of foreign workers in the labour market, we should note that **85.93%** of them work on an **employee-basis** and the remaining **14.07%** on a **self-employed basis**, thereby presenting a higher rate of salaried employment than Spanish workers, of whom 80.81% work on an employee-basis and 19.19% on a self-employed basis.

Workers are required to register in the Social Security as in employment in the regime associated with the type of activity performed. The regime that includes the highest number of workers registered as in employment is the **General Regime**, which concentrates **68.17%**

Foreign and Spanish workers registered as in employment by regime. 31-12-2008



Foreign and Spanish workers registered as in employment by activity sector. 31-12-2008



of the total number of foreign workers and 76.59% of the total number of Spanish workers. This regime is followed by the **Special Self-employed Workers' Regime** (11.77% of foreign workers and 18.80% of Spanish workers), the **Special Agricultural Workers' Regime** (10.77% of foreign workers and 3.49% of Spanish workers), and the **Special Domestic Service Regime** (9.05% of foreign workers and 0.70% of Spanish workers). The other two regimes are minority in both cases. Therefore, the biggest percentage differences in relation to Spanish workers are found in the Special Agricultural Workers' Regime and the Special Domestic Service Regime.

By activity sector, we find that the **construction sector (16.73%)** and the **agriculture sector (1.24%)** hold **more weight among foreign workers than Spanish workers** (8.49% and 0.58% respectively). The opposite is true in the services sector (70.97% among foreign workers and 74.52% among Spanish workers) and the industrial sector (11.06% and 16.42% respectively).

Foreign workers registered as in employment by contribution group. Main nationalities. 31-12-2008

| | Total | Engineers & Univ. Graduates | Technical Engineers Experts | Admin. & Workshop Managers | Unqualified Assistants | Admin. Officers | Auxiliaries | Admin. Assistants | 1st & 2nd Journeymen | 3rd Journeymen & Specialists | Unqualified workers over 18 years of age | Workers under 18 years of age |
|-----------------------|------------------|-----------------------------|-----------------------------|----------------------------|------------------------|-----------------|---------------|-------------------|----------------------|------------------------------|--|-------------------------------|
| TOTAL | 1,283,143 | 54,516 | 21,199 | 25,511 | 24,462 | 82,885 | 48,366 | 129,132 | 289,803 | 250,681 | 354,915 | 1,673 |
| Ecuador | 158,749 | 598 | 300 | 598 | 2,016 | 5,831 | 6,390 | 16,763 | 35,717 | 32,515 | 57,871 | 150 |
| Morocco | 137,098 | 739 | 480 | 685 | 1,651 | 3,174 | 3,317 | 5,932 | 31,919 | 30,652 | 58,002 | 547 |
| Romania | 135,705 | 790 | 876 | 717 | 1,660 | 3,646 | 4,681 | 7,924 | 41,032 | 30,869 | 43,394 | 116 |
| Colombia | 102,865 | 2,817 | 1,355 | 1,252 | 1,937 | 6,038 | 4,837 | 13,141 | 20,540 | 21,251 | 29,532 | 165 |
| Peru | 66,046 | 1,819 | 916 | 1,130 | 1,150 | 4,010 | 4,834 | 9,146 | 11,177 | 14,890 | 16,961 | 13 |
| Italy | 50,656 | 6,402 | 1,757 | 2,806 | 1,884 | 8,000 | 1,948 | 7,807 | 9,446 | 6,127 | 4,453 | 26 |
| Portugal | 49,043 | 2,059 | 1,180 | 1,274 | 911 | 2,617 | 1,134 | 2,598 | 21,875 | 6,987 | 8,333 | 75 |
| China | 43,458 | 504 | 104 | 287 | 889 | 2,349 | 2,502 | 3,241 | 10,894 | 12,561 | 10,101 | 26 |
| Argentina | 41,480 | 3,015 | 839 | 1,359 | 1,301 | 4,690 | 1,546 | 6,620 | 8,896 | 6,769 | 6,420 | 25 |
| Bolivia | 35,290 | 508 | 113 | 169 | 511 | 1,082 | 1,658 | 3,338 | 7,810 | 6,955 | 13,138 | 8 |
| United Kingdom | 32,957 | 5,276 | 3,524 | 1,960 | 1,055 | 4,418 | 971 | 5,413 | 5,291 | 2,876 | 2,123 | 50 |
| Bulgaria | 32,075 | 322 | 234 | 251 | 369 | 962 | 1,245 | 1,701 | 11,388 | 6,150 | 9,402 | 51 |
| France | 30,615 | 6,236 | 2,085 | 2,793 | 1,084 | 5,957 | 608 | 4,721 | 3,687 | 1,816 | 1,618 | 10 |
| Germany | 26,639 | 4,416 | 1,385 | 1,979 | 873 | 4,942 | 591 | 4,791 | 3,763 | 2,132 | 1,750 | 17 |
| Dominican Rep. | 24,823 | 359 | 60 | 171 | 420 | 1,367 | 1,068 | 2,533 | 4,321 | 6,876 | 7,585 | 63 |
| Rest of countries | 313,097 | 18,407 | 5,899 | 7,948 | 6,682 | 23,561 | 10,937 | 33,196 | 61,583 | 60,907 | 83,650 | 327 |
| Stateless and Unknown | 2,547 | 249 | 92 | 132 | 69 | 241 | 99 | 267 | 464 | 348 | 582 | 4 |

For contribution purposes, in the General Regime each worker is classed into the professional category of the job performed. In line with this classification, the largest **contribution group** among foreign workers is that of **unskilled workers over 18 years of age**, which represents **27.66%** of the total. However, on analysing the results by the worker's nationality, we find **high variability between the main fifteen nationalities**. Thus, we see that more than 50% of French and German workers are classed in the 1 to 5 groups (from Engineers and University Graduates to Administrative Officers), whilst 42.31% of Moroccan workers are included in the group of unskilled workers over 18 years of age.

Type of contract and working hours

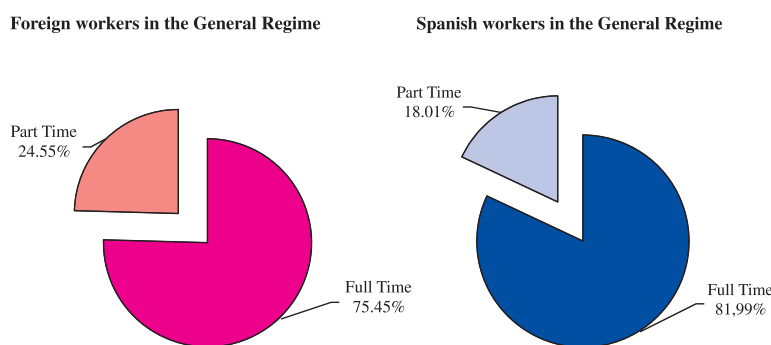
On 31 December 2008, 71.96% of the Spanish workers registered as in employment in the General Regime of the Social Security held an indefinite contract and 28.04% a temporary contract. However, on that same date **52.40%** of the foreign workers registered as in employment in the General Regime held an **indefinite contract** and the remaining **47.60%** a **temporary contract** (excluded in both cases are workers holding learning, training, practice or other types of non-classified contracts). We therefore find a **higher rate of temporality among foreign workers**.

Looking at the main fifteen nationalities, the temporality rate exceeds 50% among workers from **Bolivia** (58.47%), **Morocco** (54.82%), **Portugal** (51.02%) and **Romania** (51.00%).

In terms of **working hours**, **75.45%** of the foreign workers included in the General Regime work on a **full-time basis**, compared with 81.99% of the Spanish workers (excluded in both cases are workers holding learning, training, practice or other types of non-classified contracts).

According to the continent of nationality of the foreign workers included in the General Regime, the percentage of workers employed on a full-time basis exceeds 75.45% (a value obtained by taking into account the total number of foreign workers) among those of African origin (82.60%, which even exceeds the average among Spanish workers), European Community nationals (78.86%) and nationals of Oceania countries (77.40%). The lowest rate is found among Asians (60.03%), specifically among Chinese workers (43.75%).

Foreign and Spanish workers in the General Regime by type of working hours. 31-12-2008



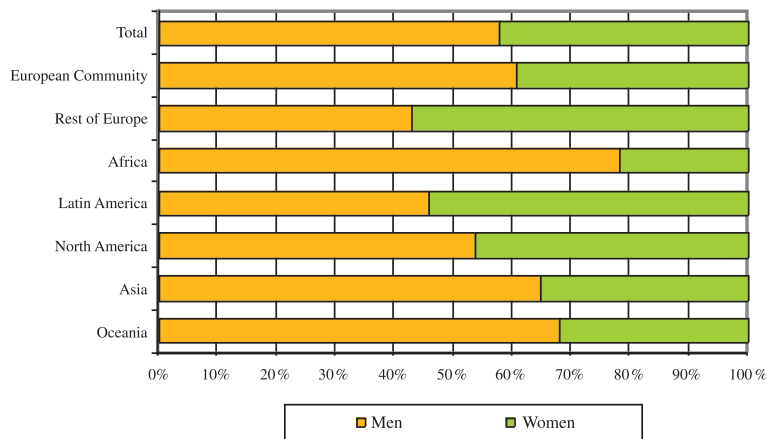
Age and sex of workers

In the labour market, **men make up a majority** among both Spanish (making up 55.89%) and foreign workers (57.81%).

By continent, **women only outnumber men** in the case of workers from **non-EC European countries (56.86%)** and **Latin America (54.21%)**. However, the proportion of women among African workers is just 21.68%.

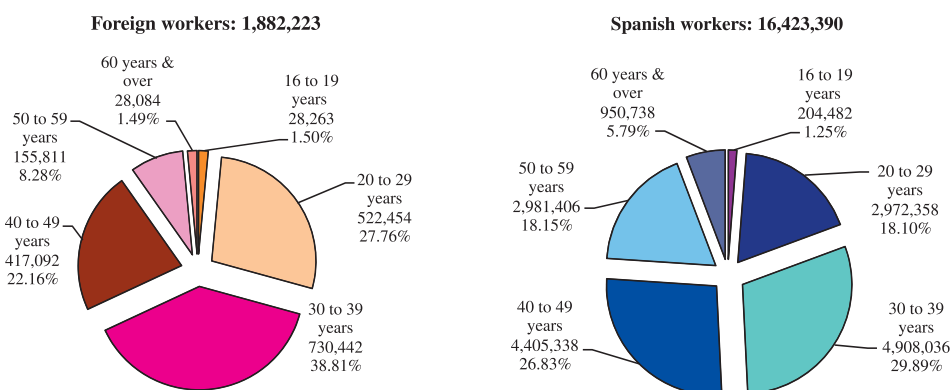
By **age**, comparing the distribution of foreign and Spanish workers, we find that the share of foreign workers between 20 and 29 years of age (27.76%) and between 30 and 39 years of age (38.81%) is significantly higher than among Spanish workers (18.10% and 29.89% respectively). By contrast, the share of Spanish workers between 40 and 49 years of age (26.83%), between 50 and 59 years of age (18.15%) and 60 years and over (5.79%) is higher than among foreign workers (22.16%, 8.28% and 1.49% respectively). The share of Spanish and foreign workers below 20 years of age is very similar, slightly above 1%.

Foreign workers registered as in employment by continent and sex 31-12-2008



Foreign and Spanish workers registered as in employment by age group. 31-12-2008

In the main fifteen nationalities, more than 50% of the workers are between 30 and 49 years of age, highlighting Ukraine with the highest percentage (65.69%). The Romanian is the nationality with the highest share of young workers, aged between 16 and 29 years (36.94%). Lastly, the highest share of workers aged 50 years or over is found among the British (26.55%).



Province

The provinces with higher numbers of foreign workers registered as in employment in the Social Security are Madrid (415,670), Barcelona (305,236), Valencia (99,616), Murcia (91,153) and Alicante (79,167). These five provinces concentrated 52.64% of the total number of foreign workers on 31 December 2008.

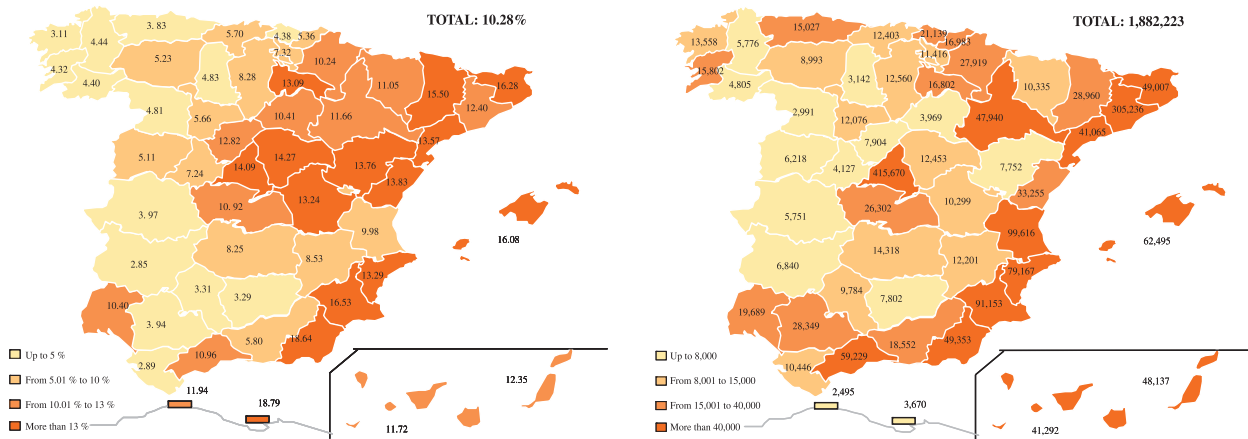
Looking at the main fifteen provinces, they all experienced falls in numbers of foreign workers from 31 December 2007. The province with the sharpest fall was Madrid (20,304 fewer foreign workers), although the steepest drop in percentage terms was Castellón (15.94% less foreign workers than at the end of 2007), followed by Alicante (falling by 14.07%).

Foreign workers made up 10.28% of the total number of workers on 31 December 2008. The biggest shares of foreign workers over the total number of workers were found in Melilla (18.79%), Almería (18.64%), Murcia (16.53%), Girona (16.28%), the Balearic Islands (16.08%) and Lleida (15.50%). In fourteen provinces the share of foreign workers was below 5%, and below 3% in Cádiz (2.89%) and Badajoz (2.85%).

Foreign workers registered as in employment. Main provinces. 31-12-2007 and 31-12-2008

| | 31-12-2008 | 31-12-2007 | Annual variation | |
|-----------------------|------------------|------------------|------------------|--------------|
| | | | Absolute | % |
| TOTAL | 1,882,223 | 1,981,106 | -98,883 | -4.99 |
| Madrid | 415,670 | 435,974 | -20,304 | -4.66 |
| Barcelona | 305,236 | 309,704 | -4,468 | -1.44 |
| Valencia | 99,616 | 108,483 | -8,867 | -8.17 |
| Murcia | 91,153 | 97,484 | -6,331 | -6.49 |
| Alicante | 79,167 | 92,132 | -12,965 | -14.07 |
| Baleares | 62,495 | 67,099 | -4,604 | -6.86 |
| Málaga | 59,229 | 65,266 | -6,037 | -9.25 |
| Almería | 49,353 | 49,954 | -601 | -1.20 |
| Girona | 49,007 | 53,890 | -4,883 | -9.06 |
| Las Palmas | 48,137 | 52,686 | -4,549 | -8.63 |
| Zaragoza | 47,940 | 53,403 | -5,463 | -10.23 |
| Sta. Cruz de Tenerife | 41,292 | 45,038 | -3,746 | -8.32 |
| Tarragona | 41,065 | 45,999 | -4,934 | -10.73 |
| Castellón | 33,255 | 39,561 | -6,306 | -15.94 |
| Lleida | 28,960 | 31,149 | -2,189 | -7.03 |
| Rest of provinces | 430,648 | 433,284 | -2,636 | -0.61 |

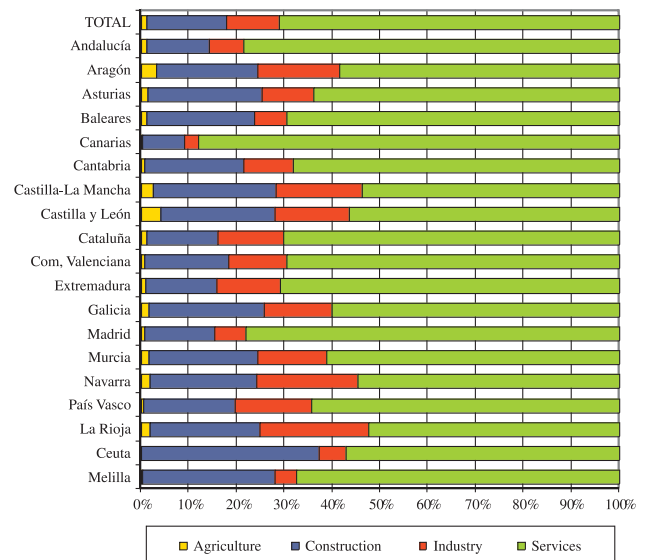
Foreign workers registered as in employment and share over total number of workers by province. 31-12-2008



Activity sector by autonomous community

Services is the major sector in all the autonomous communities for both foreign and Spanish workers. The percentage of foreign workers in the Services sector is 70.97%, reaching the highest peak in the Canary Islands (87.96%), and the lowest in La Rioja (52.32%). For foreign workers, the Construction sector takes up second place, representing 16.73%. The biggest share of foreign workers in this sector is found in Ceuta (37.36%) and the lowest in the Canary Islands (8.76%). In third place, Industry employs 11.06% of the foreign workers. The autonomous community with the highest share of foreign workers in Industry is La Rioja (22.85%), and the Canary Islands (2.98%) has the lowest. Lastly, Agriculture employs 1.24% of the foreign workers, reaching 4.13% in Castilla y León.

Foreign workers by autonomous community and activity sector. 31-12-2008



SOURCES AND METHODOLOGICAL NOTES

The data provided in this bulletin refers to workers affiliated to the Social Security system and registered as in employment or in a similar situation on 31 December 2008. The information has been supplied by the General Treasury of the Social Security, which is responsible for producing the statistics, although the specific exploitation of data on foreign workers is carried out by the Permanent Observatory for Immigration.

The data published no longer includes several types of labour relations where contributions are occasionally paid but the subjects are not accounted for as workers, as in the case of inmates, social collaboration workers, students in professional training schools, workers on industrial retraining, electoral tables, etc.